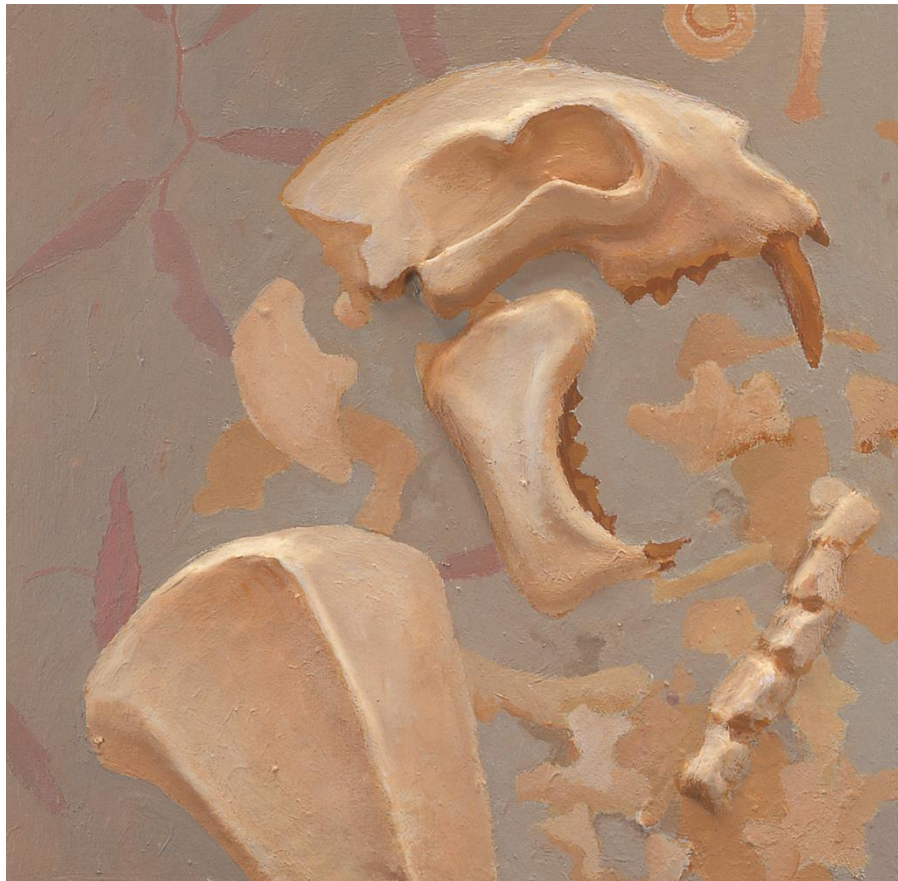


Make your own 3D Fossil Tile- Barbara Page *Rock of Ages Sands of Time*

Rock of Ages Sands of Time, by the artist Barbara Page, is a centerpiece of our Museum. It is a timeline of Earth's history from the first multicellular life to the year 2000. There are 544 11"x11" tiles that cover the past 544 million years. Each tile represents one million years. Important fossils from Earth's history are painted life-size, sometimes over multiple tiles to show how long these creatures existed. You can come to the Museum to visit the exhibit and see Barbara Page's tiles for inspiration or you can download izi.travel app from the Google Play or Apple App store and hear the story and see the tiles from your couch. <https://izi.travel/en/app>

We learned about how to make these tiles from the artist a few years back and wanted to bring the knowledge to you. It is a very easy process to make one, and once you do, you will not be able to stop!



Tile #28



I. Plan and Design

A. Materials needed:

1. Photograph of the fossil or fossils you want to use- You can take a photo of a fossil from our Museum, use one of your own, or use a creative common photo off the web- print off the photo or work digitally. You will be cropping this photo and gridding it to help with the transfer to the tile
2. Tile support. Barbra Page used Masonite, and we used a brand specifically from painting called Hard Bord, but you can use flat wood or thick sturdy cardboard from a box. It can be any size.
3. Gesso or acrylic paint (white works best, but you can use any color as long as it's not too bright) to cover your tile and create a solid-color surface
4. Paper clay. This was the clay recommended by Barbara Page. It can be purchased at most craft stores or online. We used Creative brand.
5. Art supplies- pencil and eraser, ruler, acrylic paint and brushes of varied sizes.
6. (Optional) A sealant or varnish for your finished tile. Mod Podge is one, but there are many options.
7. A place to work that has good light, can be covered for paint spills and can be left unattended while your work dries.

B. Plan:

1. Paint your tile with gesso or your base coat paint. Brush only in one direction (up and down or side to side) for the first coat. When that's dry, come back and brush in the opposite direction. Do that, alternating which way your brushstrokes go, until you have an opaque coat.
2. Once your gesso is completely dry, use a ruler to mark lines one inch apart across the tile. Once you do that vertically and horizontally, you'll have a grid.
3. Look at the photo of your fossil. Pick which part is most interesting and you want to put on your tile-- you don't have to use the whole photo! Mark the part you want to use off in the same shape as your tile. We cropped the whole image down to just the part we wanted to make it easier for us
4. Make lines over the area you want to use just like you did on your tile; mark lines horizontally and vertically in that area an equal distance apart. We want to have the same number of boxes on both the tile and the picture— for example, since we used a 6x6 tile, we have six boxes on each edge. Even if your picture is smaller than 6x6, we still want six boxes on each edge.
5. Using a pencil, draw your photo on the tile, using the grid to make sure everything is in the right place and the right size. It doesn't have to be perfect or even very detailed! We just want to know where the edges of things are.



II. Make your Tile 3D using Creative Paper Clay

A. Examine the photo you are using. Even though it's only a photo, the original fossil had a 3D shape. Think about what which parts of your fossil would stick out towards you the most. Once you have the parts you are going to make 3D picked out, add the paper clay. You can roll out balls or tubes, or just small lumps, and stick them onto your tile. Use your fingers to form the clay into the shapes of the fossils, adding texture or smoothing out. Add or remove as much as you want until you think it looks right. This clay is very light and easy to work with. You can add a tiny bit of water to your fingers to make an area smooth or the tip of your pencil to make holes or lines. Remember you will be painting the whole thing so it won't matter if you leave some marks.

B. Add to your tile until you feel you have what you want. Remember you can follow the exact fossil or be creative. Once done let air dry for several days.

III. Add color to your 3D tile with paints

A. We recommend acrylic paints since they are very compatible with this clay. Decide what colors you want to paint your tile- fossil and surrounding rock. Barbara would consider the true colors of the rock and fossil. Sometimes her colors are accurate, sometimes they are just inspired by the real-life colors. She uses lots of bright colors. You can be as realistic or creative as you want. You can paint additional fossils in the rocks that are not 3D too.

B. Complete the painting and allow to dry. We recommend a spray acrylic sealer for your tile but you could also use a water-based acrylic sealer and paint it over your tile.

C. Now you just have to wait for it to dry and hang it. The clay is so light that if you made a small tile it might hang on your refrigerator with a couple of magnets! You can frame it or just hang like we have in our Museum.

Come get inspired by Barbara Page
and make a 3D Fossil Tile of your own!

