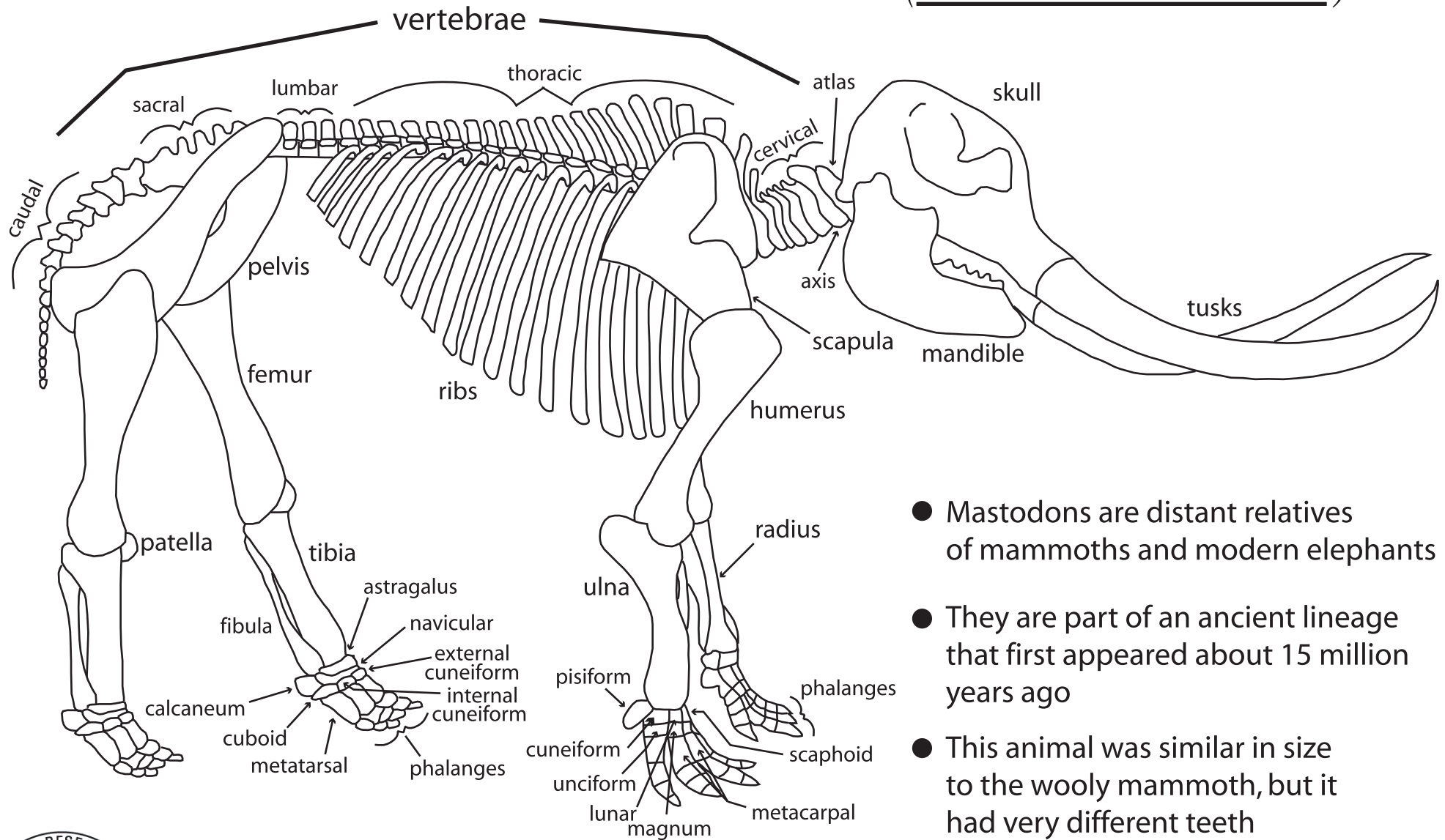


American Mastodon (*Mammot americanum*)



- Mastodons are distant relatives of mammoths and modern elephants
- They are part of an ancient lineage that first appeared about 15 million years ago
- This animal was similar in size to the woolly mammoth, but it had very different teeth
- Mastodons became extinct 10,000 years ago, probably as a result of climate change as the Earth warmed



© Paleontological Research Institution
 1259 Trumansburg Rd (Rt 96)
 Ithaca, NY 14850
<http://www.priweb.org>
<http://www.museumoftheearth.org>